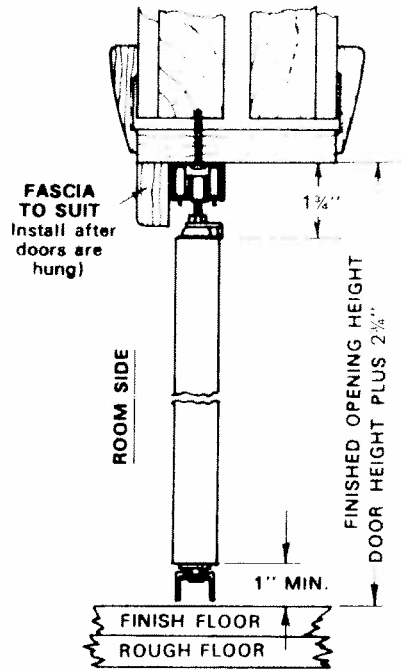


# GENERAL DESCRIPTION

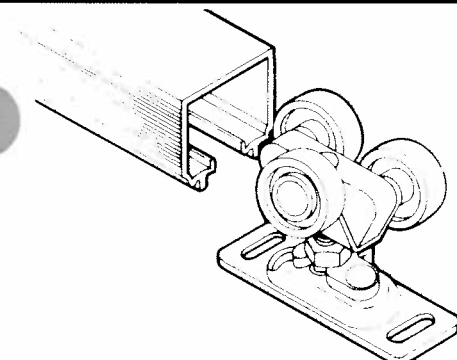
A deluxe, commercial grade set of folding door hardware that is designed for use with heavier than normal doors, up to 50 pounds per panel.

Doors are top hung which allows a minimum top gap for best appearance. Smooth, trouble free operation is assured by the non-binding features provided by Johnson patented hardware.

For those quality construction projects that require a little extra touch in materials, the Johnson 111 Series is the solution.

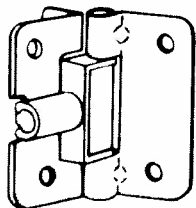


# EXCEPTIONAL FEATURES



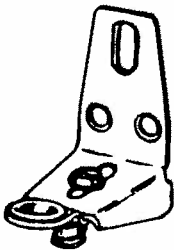
## TRICYCLE HANGERS

Heavy walled, aluminum track is precision extruded to provide a smooth operation with the Johnson tricycle hanger. Hanger cannot fall off the track yet can be easily disengaged from the door if necessary. Convex track rail gives one-point contact with each machine turned and balanced nylon wheel. Hangers are permanently lubricated and are adjustable for settling changes.



## SELF LOCATING HINGES

The patented Johnson "Breathing" hinge allows for door warpage, etc., which can cause binding. Self locating fingers automatically space doors.



## ADJUSTABLE JAMB BRACKET

Allows for alignment of doors with jambs. Bottom door pivot snaps in or out easily. Door weight is held at top only — not supported by jamb bracket, thus no bind or friction problems.

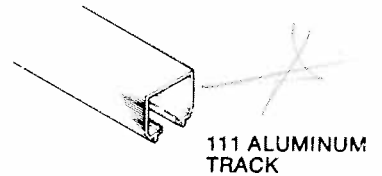
**Johnson** HARDWARE  
TRICYCLE HANGER  
ALUMINUM TRACK  
QUALITY APPEARANCE

FOLDING  
DOOR  
HARDWARE  
SET

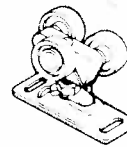
FOR  
TWO DOORS  
OR FOUR  
DOORS

1 1/8" TO 1 3/4"  
THICK PANELS  
To 50 lbs. each

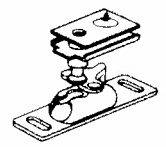
**SERIES 111FD**



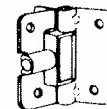
111 ALUMINUM TRACK



1020  
HANGER  
(2 DR - 1 ea.)  
(4 DR - 2 ea.)



118  
PIVOT  
(2 DR - 1 ea.)  
(4 DR - 2 ea.)



1703  
HINGE  
(2 DR - 3)  
(4 DR - 6)



33  
KNOB  
(2 DR - 1)  
(4 DR - 2)



1711  
JAMB  
BRACKET  
(2 DR - 1 ea.)  
(4 DR - 2 ea.)



1707  
BOTTOM  
PIVOT  
(2 DR - 1 ea.)  
(4 DR - 2 ea.)



1155  
STOP  
(2 DR - 1)  
(4 DR - 2)



1808  
ALIGNER  
(4 DR ONLY)

**PLUS ALL SCREWS AND  
COMPLETE INSTRUCTIONS  
FURNISHED**

# GENERAL INSTALLATION



TRICYCLE HANGER  
ALUMINUM TRACK  
QUALITY APPEARANCE

**FOLDING  
DOOR  
HARDWARE  
SET**

FOR  
TWO DOORS  
OR FOUR  
DOORS

11/8" TO 13/4"  
THICK PANELS  
To 50 lbs. each

**SERIES 111FD**

**ORDERING INFORMATION**

	LBS. PER 6 SETS
<b>TWO DOOR</b> 111FD362 For 2-18" Doors	11
<b>FOUR DOOR</b> 111FD484 For 4-12" Doors	20
111FD604 For 4-15" Doors	21
111FD724 For 4-18" Doors	23
111FD964 For 4-24" Doors	27

Prepare opening carefully, making sure corners are square, header is level, and jambs are straight.

Cut track to fit opening width, insert parts into track, and fasten track to header 3/4" from front edge. Center of track pivot pin is located 2 1/4" from jamb, tighten in place.

Fasten hinges on BACK side of doors, with spring block pointing to jamb edge, 7" from top and 11" from bottom, remaining hinge midway between.

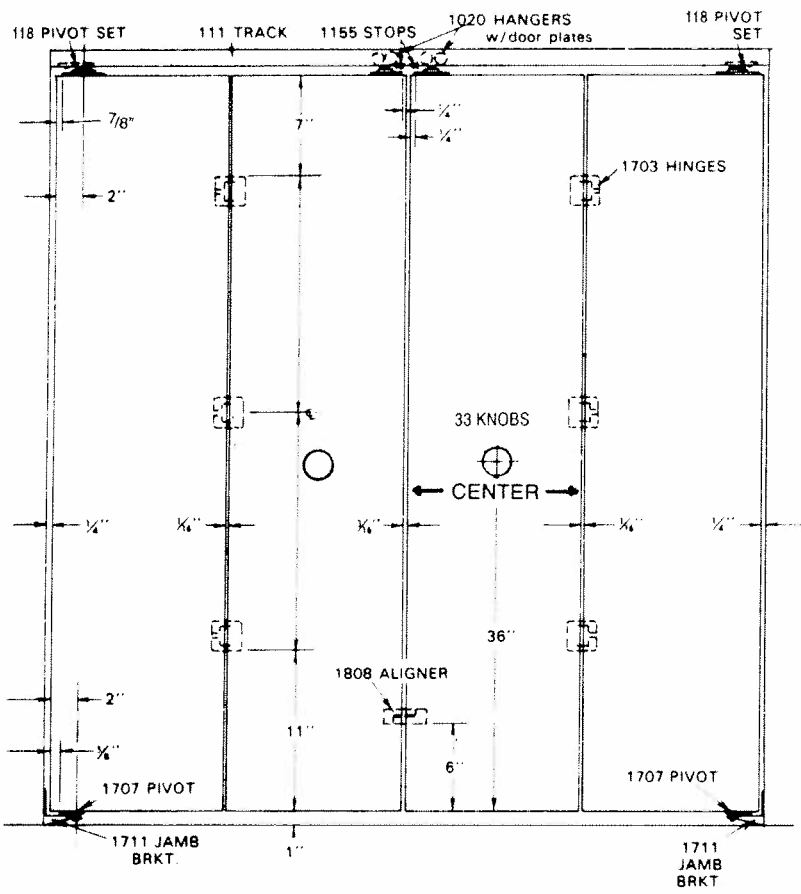
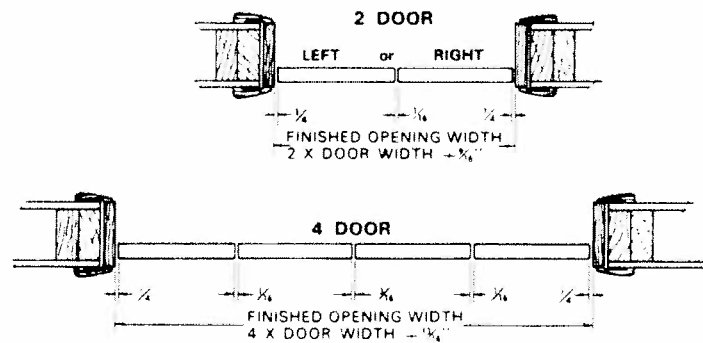
Fasten top and bottom pivot plates 2" from jamb edge of door #1 (and/or #4), and hanger plate 1 5/8" from opposite edge of door #2 (and/or #3), on top edge. NOTE: Nylon clips must be facing back side of doors.

Slip pins of pivot and hanger into their respective door plates and lock in place with nylon clips.

Use template in set to locate jamb bracket, or slip pivot socket over bottom pivot pin, plumb doors with jamb and mark location of jamb bracket. Swing doors aside and fasten bracket to jamb, depress pivot socket and release when bottom pivot pin is positioned over it.

Make final adjustments at pivots, top and bottom, and/or hanger for proper, effortless opening and closing. When this is achieved, close doors, move track stop to hanger. Open doors, move stop 1/8" closer to pivot jamb and tighten to track. Doors should "snap" shut without undo force.

Add aligners to back side (4 DR) and knobs as shown on diagram.



**NOTE:**  
Locking nylon swivel arm must open toward rear of opening. Fascia interferes with front opening.

